

# South Gloucestershire Landscape Character Assessment

## Annex II: Strategic Viewpoints

### South Gloucestershire Council

**Final Draft Report for Adoption Chapter 20**

Prepared by LUC

September 2024



Version	Status	Prepared	Checked	Approved	Date
1	Draft Method and Pilot	E White L Jewitt	K Davies	K Davies	03.04.2023
2	Draft Report	L Jewitt V Kakar	E White	K Davies	16.05.2023
3	Draft Report	E White L Jewitt	E White	K Davies	14.07.2023
4	Final Draft	E White L Jewitt	E White	K Davies	01.11.2023
5	Final Draft (updated following New Local Plan Phase 3 consultation)	L Jewitt	E White	K Davies	12.06.2024
6	Final Draft Report for Adoption	L Jewitt	E White	K Davies	11.09.2024



**Land Use Consultants Limited**

Registered in England. Registered number 2549296. Registered office: 250 Waterloo Road, London SE1 8RD. Printed on 100% recycled paper

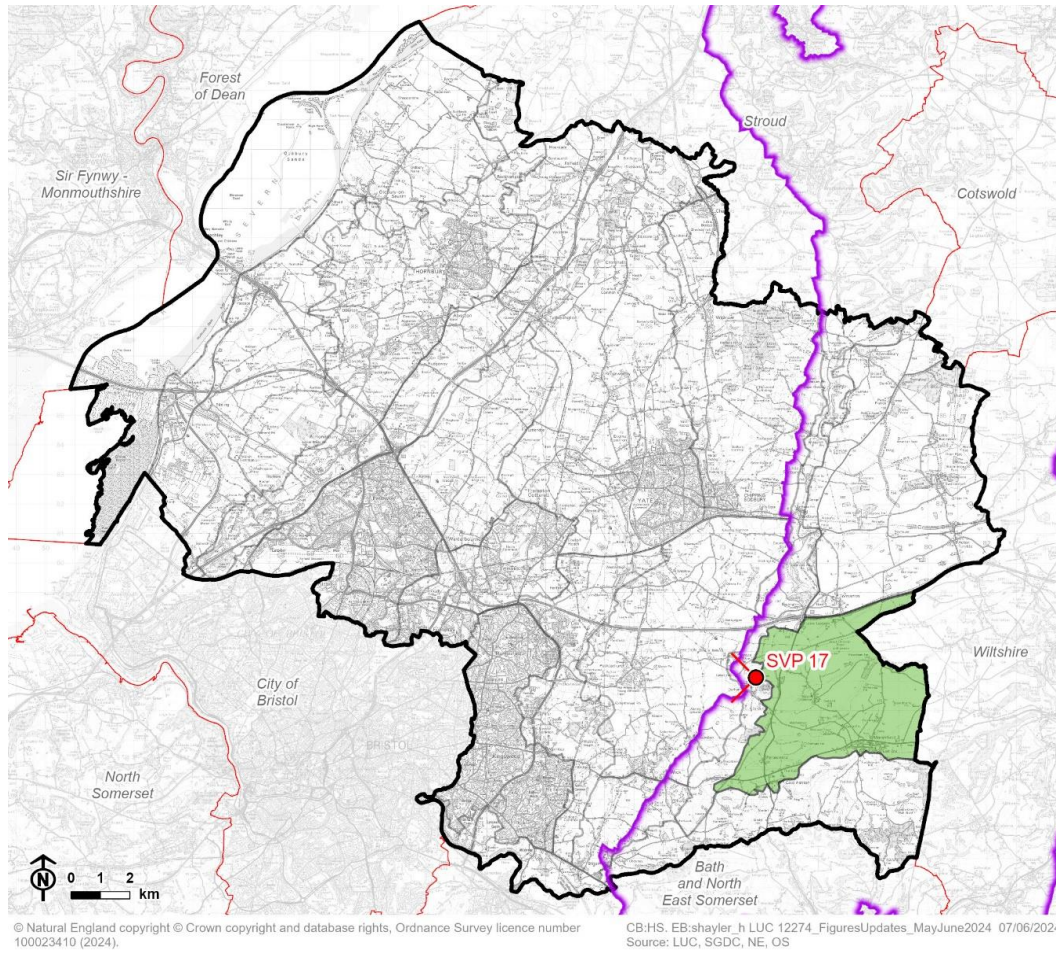
# Contents

<b>Chapter 20</b>	<b>142</b>
Strategic Viewpoint 17: Dyrham Park	
Characteristics	149
Summary	151
<b>References</b>	<b>152</b>

# Chapter 20

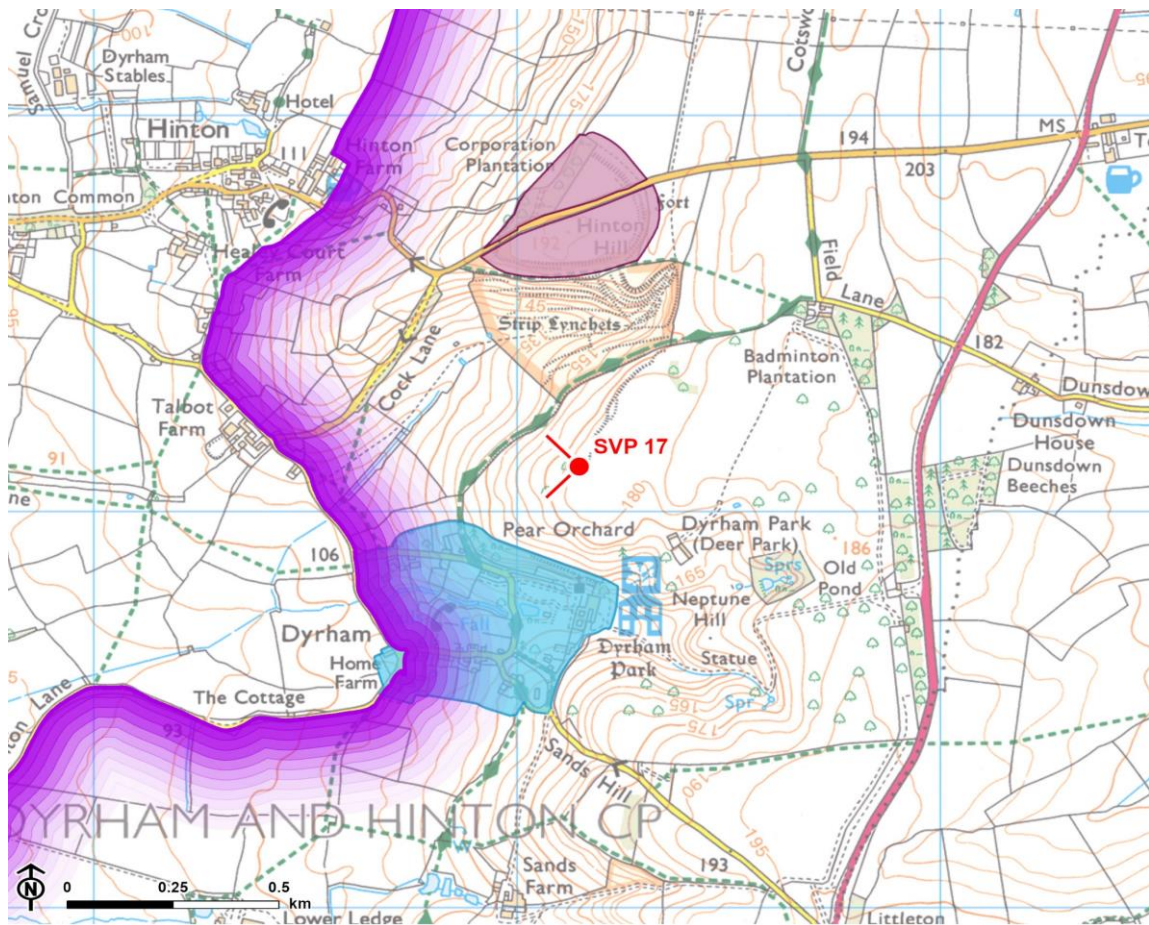
## Strategic Viewpoint 17: Dyrham Park

Figure 20.1: Location of Strategic Viewpoint 17 and landscape character context



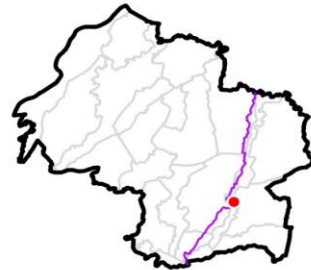
-  Council boundary
-  Neighbouring local authority
-  Cotswolds National Landscape (AONB) boundary
-  LCA 2: Marshfield Plateau
-  Strategic viewpoint and angle

Figure 20.2: Detailed map of the location of Strategic Viewpoint 17



© Natural England. © Historic England. Contains Ordnance Survey data © Crown copyright and database rights, Ordnance Survey licence number 100023410, 2024.

-  Council boundary
-  Cotswolds National Landscape (AONB) boundary
-  Conservation area
-  Scheduled monument
-  Strategic viewpoint and angle



## Viewpoint Information

**Grid reference:** ST 74089 76088

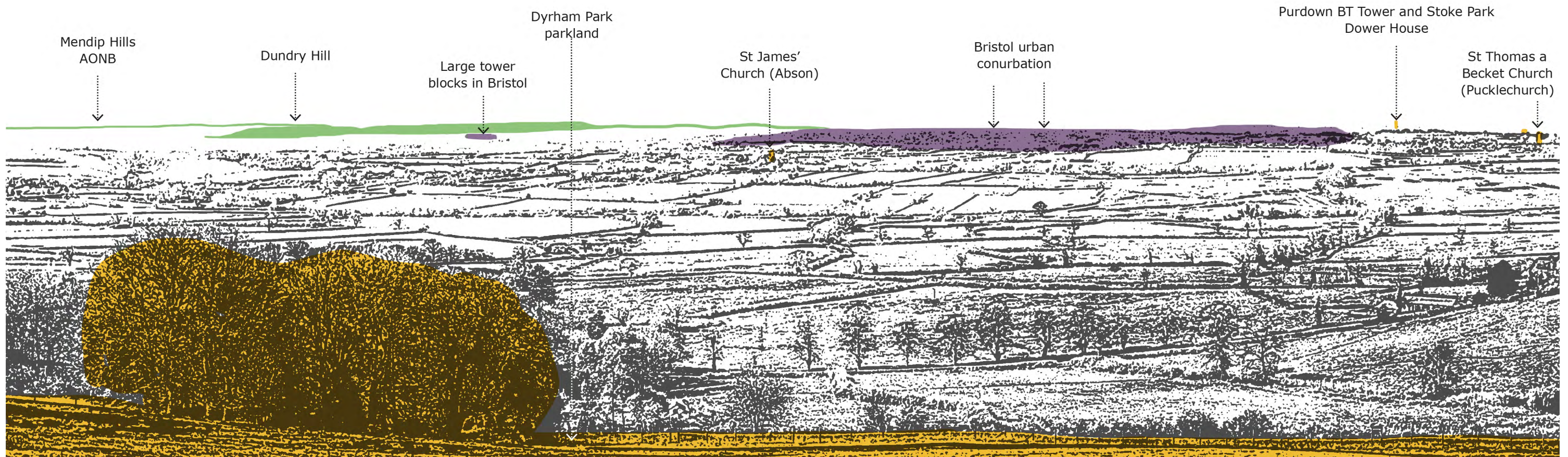
**View location:** Top of the deer park in Dyrham Park.

**View direction:** Views north and south along LCA 4: Cotswold Scarp, west across LCA 6: Pucklechurch Ridge and the Boyd Valley, and east into LCA 2: Marshfield Plateau.

**Relationship with Visually Important Hillside (VIH):** Viewpoint is located along the Cotswold Scarp VIH.

**Experienced by:** Visitors to Dyrham Park

Figure 20.3: View Composition of Strategic Viewpoint 17 (view west)



Key landscape feature

Landmark / historic feature

Detractive feature

Figure 20.4: View Composition of Strategic Viewpoint 17 (view north-west)



 Key landscape feature

 Landmark / historic feature

 Detractive feature



Figure 20.5: Full Panoramic Photograph of Strategic Viewpoint 17



Strategic Viewpoint 17: Dyrham Park



Strategic Viewpoint 17 (continued)



Strategic Viewpoint 17 (continued)

## Characteristics

### Popularity, access and facilities

- The viewpoint is located within Dyrham Park, a National Trust-managed site and popular visitor destination with facilities including a café, picnic area, toilets and a car park. The viewpoint location is marked on Google Maps as 'Dyrham Park Viewing Point'.
- The viewpoint location is noted in LCA 4: Cotswold Scarp which notes that *"in particular important viewpoints from the scarp include Dyrham Deer Park... together with sections of the Cotswold Way permit expansive views of the vale landscape below and as far as Wales in the distance."*
- A visitor guide and walking route leaflet produced by the National Trust symbolises the viewpoint on its mapping. A waymarked route 'The Prospect Walk' guides visitors around several key locations within the park, including this viewpoint, which is noted for its 'sweeping vistas'. **[See reference 1]**.
- A bench and toposcope are provided at the viewpoint to facilitate enjoyment and interpretation of the view.

### Relationship with the Cotswolds National Landscape (CNL)

- The viewpoint is located in the CNL and enables panoramic views within and out of the designated landscape.
- Views from the Cotswold Scarp are considered to be a special quality of the designated landscape, as set out in the CNL Management Plan.

### Quality, value and features of the view

- An elevated viewpoint on the edge of the Cotswold Scarp VIH, providing panoramic (180°) views to the north, west and south across a large proportion of

## Chapter 20 Strategic Viewpoint 17: Dyrham Park

South Gloucestershire and beyond. In middle-distance views, the Pucklechurch Ridge and Boyd Valley is seen (characterised by medium-scale rolling pastoral fields enclosed by a mature hedgerow framework with scattered woodlands and copses, a dispersed settlement pattern, and a strong sense of time depth). The undulating slopes of the Cotswold Scarp are seen in views to the north, south and immediate west that mainly features the parkland landscape of Dyrham Park and the Marshfield Plateau. Longer distance views to the north-west look across the shallow ridges, valleys and vale landscapes of South Gloucestershire where small settlements are scattered across the landscape, and the urban sprawl of the Bristol conurbation forming a dominant feature in views to the west.

- The view extends towards the levels and estuary with the distinctive hillsides of South Wales forming a distinctive backdrop. To the south-west, Dundry Hill and the Mendip Hills National Landscape (AONB) define the skyline.
- The square towers of the Grade I listed St Thomas à Becket Church in Pucklechurch Conservation Area (4.2km away) and St James Church in Abson (3.8km away), form landmark features within the view. The Huckford Viaduct in Winterbourne (9.3km away), the Purdown BT Tower (13km away), and Dower House in Stoke Park Estate (12km away) form more distant landmark features. The Severn Bridge and Prince of Wales Bridge are also visible in long distance views over 22km away.
- The viewpoint is located within the designed landscape of Dyrham Park (Grade II Registered Park and Garden), and represents views experienced from the deer park.
- A turbine at Hinton in the north is in relatively close proximity to the viewpoint (1.4km away); however, does not detract from the main frame of the view to the west. A locally distinctive group of three wind turbines near Tytherington are visible 12km away against the relatively low-lying landform; although do not detract from the overall composition of the view given the breadth of the view.

## Summary

The Dyrham Park viewpoint is categorised as a SVP as it meets most of the criteria to some extent. It is a popular, well known and recorded viewpoint and likely to attract many visitors; it is noted in the South Gloucestershire Landscape Character Assessment as being a natural observation point from which to appreciate the landscape; benches and a toposcope facilitate enjoyment and interpretation of the view; it allows appreciation of the Cotswold National Landscape and provides a notable view from the designated landscape; it provides a panoramic view that takes in notable landscape and landmark features across most of South Gloucestershire, extending to the hills of South Wales, Dundry Hill and the Mendip Hills National Landscape (AONB); and is a designed viewpoint from a Registered Park and Garden.

## References

# References

- 1 Dyrham Park Prospect Walk route information. (No date). Available online at: <https://www.nationaltrust.org.uk/visit/bath-bristol/dyrham-park/the-prospect-walk>

Report produced by LUC

# Report produced by LUC

## **Bristol**

12th Floor, Colston Tower, Colston Street, Bristol BS1 4XE

0117 929 1997

bristol@landuse.co.uk

## **Cardiff**

16A, 15th Floor, Brunel House, 2 Fitzalan Rd, Cardiff CF24 0EB

0292 032 9006

cardiff@landuse.co.uk

## **Edinburgh**

Atholl Exchange, 6 Canning Street, Edinburgh EH3 8EG

0131 202 1616

edinburgh@landuse.co.uk

## **Glasgow**

37 Otago Street, Glasgow G12 8JJ

0141 334 9595

glasgow@landuse.co.uk

## **London**

250 Waterloo Road, London SE1 8RD

020 7383 5784

london@landuse.co.uk

## **Manchester**

6th Floor, 55 King Street, Manchester M2 4LQ

0161 537 5960

manchester@landuse.co.uk

## **landuse.co.uk**

Landscape Design / Strategic Planning & Assessment

Development Planning / Urban Design & Masterplanning

Environmental Impact Assessment / Landscape Planning & Assessment

Landscape Management / Ecology / Historic Environment / GIS & Visualisation